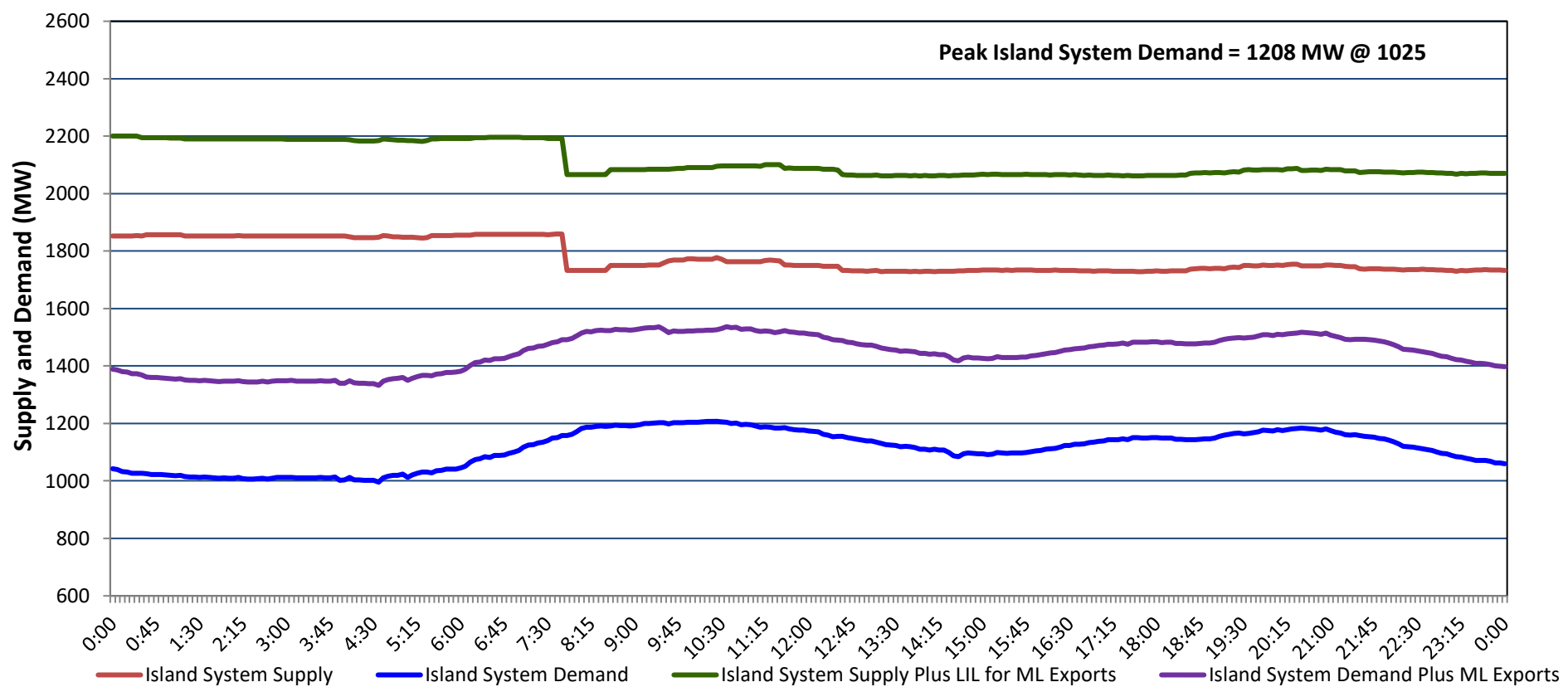


# Newfoundland Labrador Hydro (NLH) Supply and Demand Status Report Filed Monday, March 31, 2025

## Section 1 Island Interconnected System - Supply, Demand & Exports Actual 24 Hour System Performance For Saturday, March 29, 2025



### Island Supply Notes For March 29, 2025

- 1
- A As of 0952 hours, March 11, 2025, Granite Canal Unit available at 32 MW due to forced derating (40 MW).
  - B As of 0902 hours, March 20, 2025, Holyrood Unit 3 available but not operating 130 MW (150 MW).
  - C As of 0816 hours, March 26, 2025, St. Anthony Diesel Plant available at 8.85 MW due to forced derating (9.7 MW).
  - D **At 0747 hours, March 29, 2025, Holyrood Gas Turbine unavailable due to planned outage (123.5 MW).**

## Section 2 Island Interconnected System - Supply, Demand & Outlook

Sun, Mar 30, 2025	Island System Outlook <sup>2</sup>	Seven-Day Forecast	Island System Daily Peak Demand (MW)	
			Forecast <sup>8</sup>	Adjusted <sup>6</sup>
Island System Supply: <sup>4</sup>	1,749 MW	Sunday, March 30, 2025	1,245	1,161
NLH Island Generation: <sup>3,7</sup>	1,410 MW	Monday, March 31, 2025	1,345	1,259
NLH Island Power Purchases: <sup>5</sup>	105 MW	Tuesday, April 1, 2025	1,210	1,126
NP and CBPP Owned Generation:	210 MW	Wednesday, April 2, 2025	1,280	1,195
LIL/ML Net Imports to Island: <sup>9</sup>	24 MW	Thursday, April 3, 2025	1,420	1,334
		Friday, April 4, 2025	1,305	1,220
7-Day Island Peak Demand Forecast:	1,420 MW	Saturday, April 5, 2025	1,260	1,175

### Island Supply Notes For March 30, 2025

- E **At 0800 hours, March 30, 2025, Holyrood Unit 3 unavailable due to planned outage 130 MW (150 MW).**

- Notes:
1. Generation outages for running and corrective maintenance are included. These are not unusual for power system operations. They generally do not impact customer supply. Hydro schedules outages to system equipment whenever possible to coincide with periods when customer demands are low and sufficient supply reserves are available. However, from time to time equipment outages are necessary and reserves may be impacted.
  2. As of 0800 Hours.
  3. Gross continuous unit output.
  4. Gross output from all Island sources (including Note 3).
  5. NLH Island Power Purchases include: ML Imports, Exploits Generation, Rattle Brook, Star Lake, Wind Generation and capacity assistance (when applicable).
  6. Adjusted for interruptible load and the impact of voltage reduction when applicable.
  7. Due to limitations inherent in the design of combustion turbines, the output of combustion turbines may be reduced in the event that ambient temperatures exceed the threshold required for full rated output. This threshold is dependent on the design of each turbine.
  8. Does not include ML Exports.
  9. LIL Import sunk in the Island System. Actual LIL flows will be restricted by various system conditions including, but not limited to, Island Load, ML Exports and Avalon Unit status.

## Section 3 Island Peak Demand and Exports Information Previous Day Actual Peak and Current Day Forecast Peak

Sat, Mar 29, 2025	Island Peak Demand <sup>10</sup>	10:25	1,208 MW
	Exports at Peak		318 MW
	LIL Net Imports to Island		565 MWh
Sun, Mar 30, 2025	Forecast Island Peak Demand		1,245 MW

- Notes: 10. Island Demand is supplied by NLH generation and purchases, LIL Imports plus generation owned and operated by Newfoundland Power and Corner Brook Pulp & Paper (Deer Lake Power, DLP).